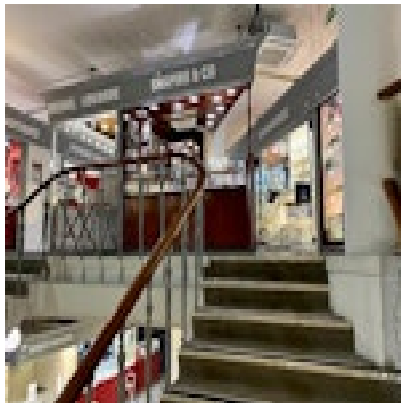


SHAPIRO & Co
since 1979



**Diamond South Sea Pearl 18ct White Gold Necklace date circa 1970,
SHAPIRO & Co since 1979
£3,250.00**

Q: Pearl farms ?

A: Pearl-cultivating technology from Japan arrived in the early 20th century, and the first pearl farms were established in the South Pacific. The first commercial harvests from these farms began in the 1950s.

Period	1970s
Condition	Excellent
Materials	Gold
Main Gemstone	Pearl

Carat for Gold

18 K

Dimensions

Length: 17inch/43.18cm

Antique ref: SHAPIRO & Co since1979