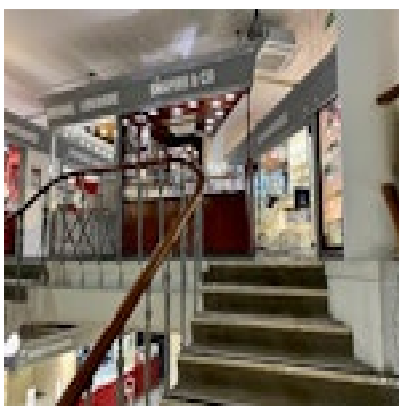




SHAPIRO & Co
since 1979



**South Sea Pearl Diamond 18ct White Gold Pendant date circa 1970,
SHAPIRO & Co since 1979
£3,250.00**

The South Sea Pearl is 13mm diameter, the Pearl is slightly oval and the colour is White Silver. More white than silver.

Period	1970s
Condition	Excellent
Materials	Gold
Main Gemstone	Pearl
Carat for Gold	18 K

**Secondary
Gemstone**

Diamond

**Secondary
Gemstone Carat**

0.60ct approximately

**Secondary
Gemstone Cut**

Brilliant Cut

Antique ref: South Sea Pearl Diamond Pendant