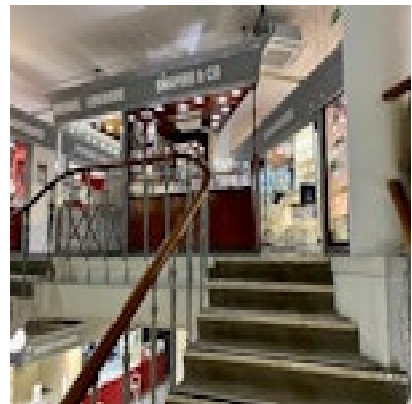




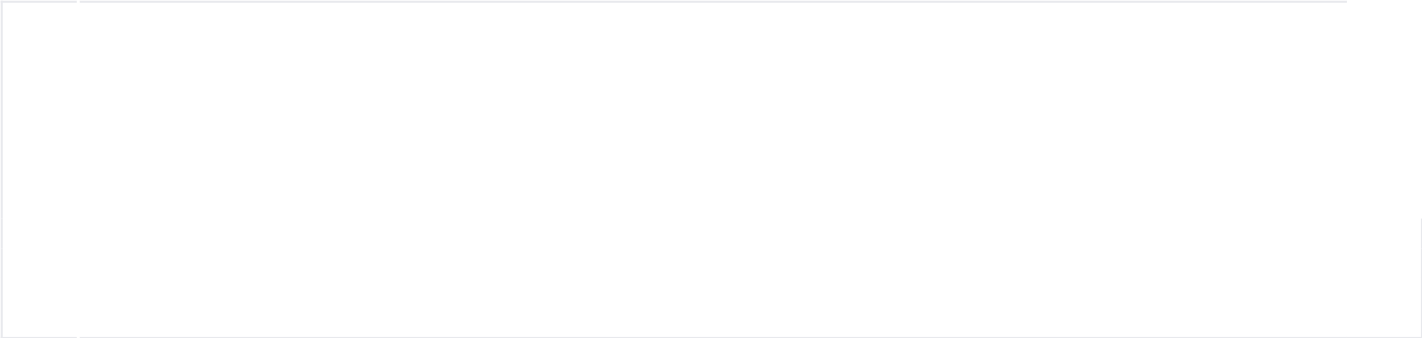
SHAPIRO & Co
since 1979



**Turquoise Natural Pearl Ruby Brooch in 15ct Gold date circa 1880,
SHAPIRO & Co since 1979
£1,850.00**

Victorian jewellery originated in England; it was produced during the Victoria era, when Queen Victoria reigned from 1837 to 1901. Queen Victoria was an influential figure who established the different trends in Victorian jewellery

Origin	British
Period	Pre 1900
Style	Victorian
Condition	Excellent



Materials	Gold
Main Gemstone	Turquoise
Carat for Gold	15 K

Antique ref: SHAPIRO & Co