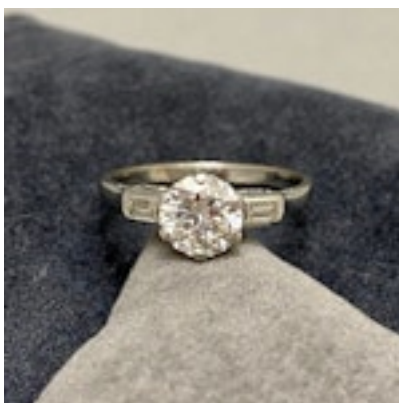
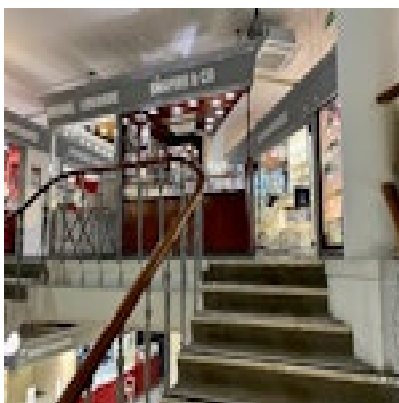


SHAPIRO & Co  
since 1979



**Diamond Ring in Platinum date circa 1940, SHAPIRO & Co since 1979  
£4,250.00**

Transitional cut diamonds were the first round diamonds of their kind, featuring an unparalleled brilliance and precise symmetry pretty unheard of at the time. Popular from the 1920s to the 1940s, they bridge the gap between the old cuts and the modern round brilliant.

<b>Period</b>	1940s
<b>Condition</b>	Excellent
<b>Materials</b>	Platinum
<b>Main Gemstone</b>	Diamond
<b>Main Gemstone Cut</b>	Transition Cut
<b>Main Gemstone Clarity</b>	SI1-SI2
<b>Main Gemstone Carat</b>	The Center Diamond: 1.05ct approximately
<b>Main Diamond Colour</b>	I-J

Antique ref: SHAPIRO & Co