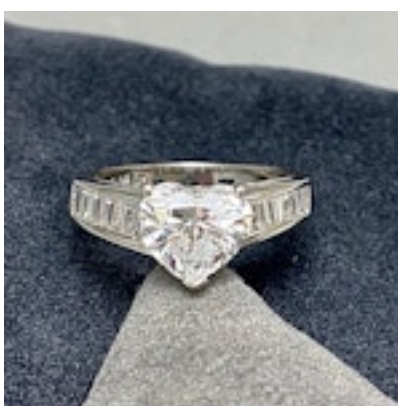
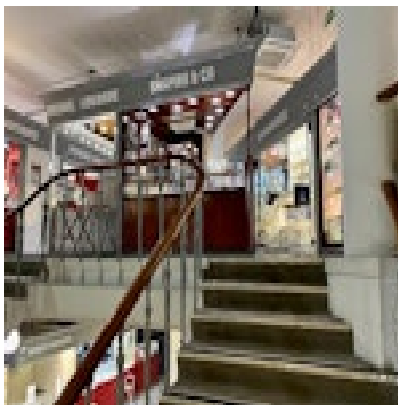


SHAPIRO & Co
since 1979



Heart Shape Diamond D Colour Ring in Platinum date circa 1980, SHAPIRO & Co since1979

£12,750.00

The heart shape is an ancient cut with royal roots. In 1463, an early heart-shaped diamond cut made its debut during private exchanges between the Duke of Milan, named Galeazzo Maria Sforza, and the Duke's confidante Nicodemo, where a heart-shaped diamond was discussed.

Period	1980s
Condition	Excellent
Materials	Platinum
Main Gemstone	Diamond
Main Gemstone Cut	Other
Main Gemstone Clarity	VS2
Main Gemstone Carat	1.62ct approximately
Main Diamond Colour	D
Secondary Gemstone	Diamond
Secondary Gemstone Carat	Total Weight: 0.60ct approximately
Secondary Gemstone Cut	Baguette Cut

Antique ref: SHAPIRO & Co