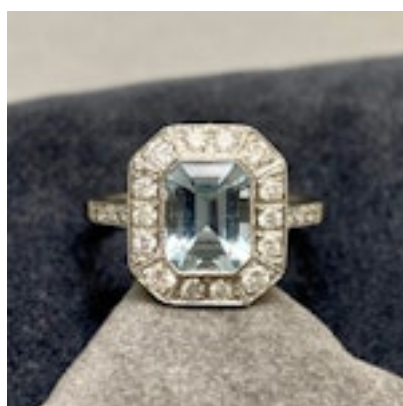
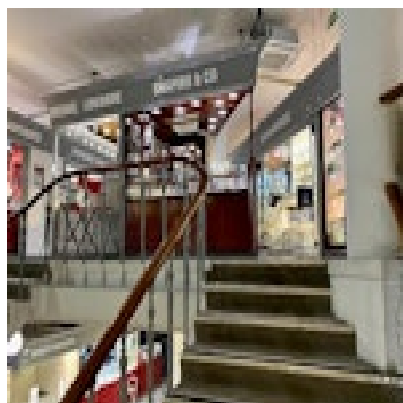


SHAPIRO & Co
since 1979



Aquamarine Diamond Ring in Platinum date circa 1980, SHAPIRO & Co since 1979

£2,750.00

It is believed that around the 1300's early faceting occurred. But in the 1400's real developments began. Grinding wheels were developed, shapes were improved upon, and better polishing rock techniques emerged. The lapidary field of gem cutting for jewellery began to divide into two techniques.

Period	1980s
Condition	Excellent
Materials	Platinum
Main Gemstone	Aquamarine
Main Gemstone Cut	Faceted Cut
Main Gemstone Carat	1ct approximately
Secondary Gemstone	Diamond
Secondary Gemstone Carat	Total weight: 0.40ct approximately
Secondary Gemstone Cut	Brilliant Cut
Ring Size	M½

Antique ref: SHAPIRO & Co