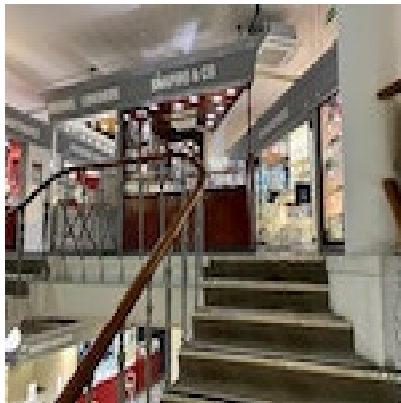


SHAPIRO & Co  
since 1979



**Emerald Cut Single Stone Ring in Platinum dated 2001, SHAPIRO & Co since 1979**

**£2,750.00**

Q: What is the history of Emerald Cut Diamonds ?

A: The emerald cut diamond is one of the oldest diamond shapes. Its stylistic origins date back to the table cut of the 1500s when stonecutters initially created the shape and cutting process for emerald gemstones

<b>Period</b>	21st Century and Contemporary
<b>Style</b>	Contemporary
<b>Condition</b>	Excellent
<b>Materials</b>	Platinum
<b>Main Gemstone</b>	Diamond
<b>Main Gemstone Cut</b>	Emerald Cut
<b>Main Gemstone Carat</b>	0.55ct approximately
<b>Hallmark</b>	dated 2001

Antique ref: SHAPIRO & Co