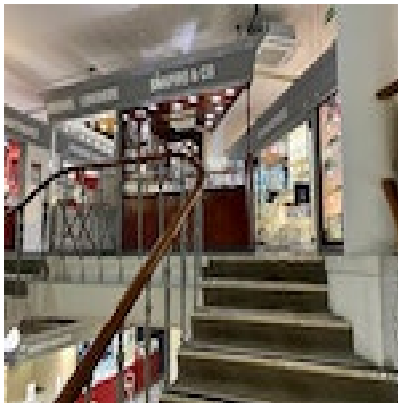


SHAPIRO & Co
since 1979



Imperial Topaz Diamond Pendant in 18ct Gold date circa 1980, SHAPIRO & Co since 1979

£2,750.00

The Imperial Topaz was tested as Natural Imperial Topaz in The Gem & Pearl Laboratory

Period	1980s
Condition	Excellent
Materials	Gold
Main Gemstone	Topaz
Main Gemstone Cut	Pear Cut
Carat for Gold	18 K
Main Gemstone Carat	3.63ct approximately
Secondary Gemstone	Diamond
Secondary Gemstone Carat	0.20ct approximately
Secondary Gemstone Cut	Brilliant Cut

Antique ref: SHAPIRO & Co