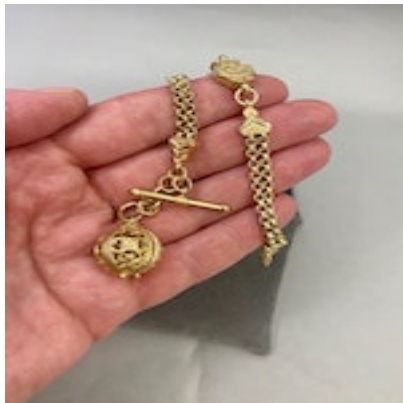
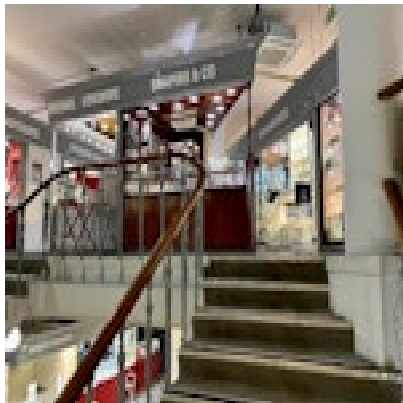


SHAPIRO & Co
since 1979





**9ct Gold Bracelet date circa 1890, Lilly's Attic since 2001
£1,250.00**

Q: Where do bracelets originate from?

A: Archaeologists, in their studies, have found strong evidence that people donned bracelets proudly in ancient Mesopotamia, Egypt and China. These bracelets were not so similar to the ones you may find for sale from SHAPIRO & Co, however. They were made of shells, grasses, thin tree limbs

Period	Pre 1900
Style	Victorian
Condition	Excellent