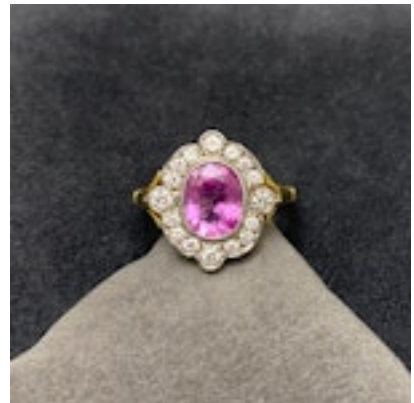
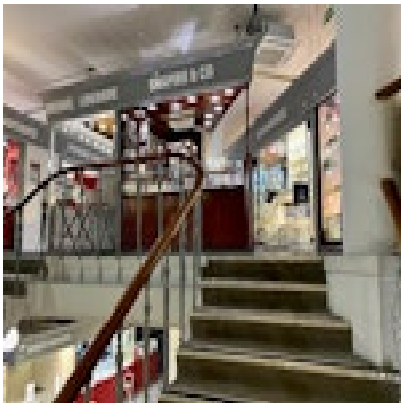


SHAPIRO & Co
since 1979



Pink Sapphire Diamond Ring in 18ct Yellow/White Gold date circa 1960, SHAPIRO & Co since 1979 £3,250.00

Q: What is the origin of the pink sapphire?

A: Pink sapphires have been mined for millennia on the beautiful island once known as Ceylon, now called Sri Lanka. The island was the origin for the valuable gems given by King Solomon to the Queen of Sheba in the Old Testament. Another famous source for pink sapphire is Burma, also known as Myanmar.

Period	1960s
Condition	Excellent
Materials	Gold

Main Gemstone	Pink Sapphire
Main Gemstone Cut	Oval Cut
Ring Size	M
Carat for Gold	18 K
Main Gemstone Carat	1.35ct approximately
Secondary Gemstone	Diamond
Secondary Gemstone Carat	Total weight: 0.45ct approximately
Secondary Gemstone Cut	Brilliant Cut

Antique ref: SHAPIRO & Co