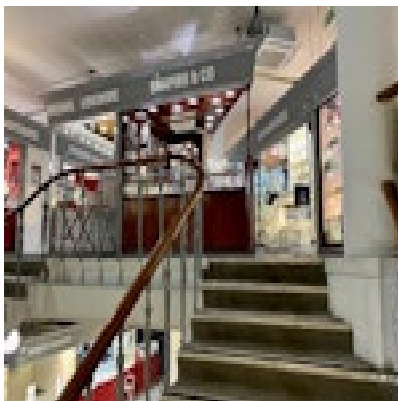


SHAPIRO & Co
since 1979



Emerald Diamond Brooch in Platinum date circa 1920, SHAPIRO & Co since 1979

£4,750.00

1920s Jewellery Fashion - Art Deco

Woman frequently wore brooches on their fur collars and cloche hats, as well as long continuous strands of pearls or round beads, gem-studded bracelets and lariat necklaces with tasseled ends. Wide bracelets, both cuff and memory wire styles, were popular.

Period	1920s
Style	Art Deco
Condition	Excellent
Materials	Platinum
Main Gemstone	Emerald
Main Gemstone Cut	Faceted Cut
Main Gemstone Carat	3ct approximately
Secondary Gemstone	Diamond
Secondary Gemstone Carat	1ct approximately
Secondary Gemstone Cut	Transition Cut

Antique ref: SHAPIRO & Co